

SMD POWER INDUCTORS

Series PT - I *Shielded*



FEATURES

- ◆ Low profile and square
- ◆ Magnetically shield and low DC resistance
- ◆ Suitable for large currents
- ◆ Excellent solderability and high heat resistance
- ◆ Low cost and packed in embossed carrier tape

APPLICATION

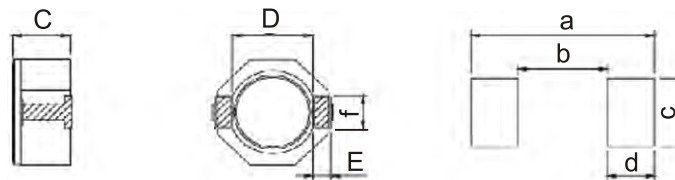
- ◆ LCD Monitor
- ◆ P.D.A
- ◆ Notebook PC
- ◆ Power supply for VTR
- ◆ Digital camera
- ◆ Small size communication equipment

PRODUCT IDENTIFICATION

$\frac{PT}{a} \quad \frac{80}{b} \quad \frac{I}{c} \quad \frac{30}{d} \quad \frac{1}{e} \quad \frac{M}{f} \quad \frac{10U}{g}$

- a : Type of products - SMD Power Inductors PT series.
 b : Dimension(mm) - 80 : 8.0X8.0
 c : Materials - I = I Type
 d : Thickness(mm) - 30 = 3.0, 40 = 4.0, 45 = 4.5, 60 = 6.0
 e : Packing - PCS/REEL - 1 = 1000, L = 3500
 f : Tolerance - K : $\pm 10\%$ M : $\pm 20\%$
 g : Inductance - 100N = 0.1uH, 10U = 10.0 uH, 1M2 = 1200uH

SHAPES & DIMENSIONS



DIMENSIONS (mm)
LAND PATTERN (mm)

Unit : mm

| Type | A ± 0.3 | B ± 0.3 | C(max) | D(ref) | E(ref) | F(ref) | a(ref) | b(ref) | c(ref) | d(ref) |
|---------|-------------|-------------|--------|--------|--------|--------|--------|--------|--------|--------|
| PT80I30 | 8 | 8 | 3.0 | 6.3 | 1.2 | 2.5 | 10.1 | 6.1 | 2.8 | 2.0 |
| PT80I40 | 8 | 8 | 4.0 | 6.3 | 1.2 | 2.5 | 10.1 | 6.1 | 2.8 | 2.0 |
| PT80I45 | 8 | 8 | 4.5 | 6.3 | 1.2 | 2.5 | 10.1 | 6.1 | 2.8 | 2.0 |
| PT80I60 | 8 | 8 | 6.0 | 6.3 | 1.2 | 2.5 | 10.1 | 6.1 | 2.8 | 2.0 |

SMD POWER INDUCTORS

Series **PT - I Shielded**

ELECTRICAL CHARACTERISTICS

TEST FREQUENCY 0.8uH ~ 8.2uH @ 100KHz / 0.25V

10uH ~ 10000uH @ 1KHz / 0.25V

| Part Number | Inductance L (μ H) | RDC (Ω) max. | Rated DC Current (A) min. |
|---------------|-------------------------|-----------------------|---------------------------|
| PT80I30L□2U | 2 | 0.022 | 5.00 |
| PT80I30L□2U5 | 2.5 | 0.024 | 4.50 |
| PT80I30L□3U5 | 3.5 | 0.031 | 4.00 |
| PT80I30L□4U7 | 4.7 | 0.040 | 3.40 |
| PT80I30L□6U2 | 6.2 | 0.049 | 3.00 |
| PT80I30L□7U3 | 7.3 | 0.060 | 2.80 |
| PT80I30L□10U | 10 | 0.079 | 2.50 |
| PT80I30L□15U | 15 | 0.109 | 1.90 |
| PT80I30L□22U | 22 | 0.157 | 1.60 |
| PT80I30L□33U | 33 | 0.205 | 1.30 |
| PT80I30L□47U | 47 | 0.310 | 1.15 |
| PT80I30L□68U | 68 | 0.430 | 0.92 |
| PT80I30L□100U | 100 | 0.560 | 0.75 |
| PT80I40I□1U8 | 1.8 | 0.015 | 7.00 |
| PT80I40I□2U5 | 2.5 | 0.017 | 6.50 |
| PT80I40I□3U5 | 3.5 | 0.024 | 5.00 |
| PT80I40I□4U7 | 4.7 | 0.029 | 4.60 |
| PT80I40I□10U | 10 | 0.048 | 3.00 |
| PT80I40I□15U | 15 | 0.067 | 2.75 |
| PT80I40I□22U | 22 | 0.105 | 2.30 |
| PT80I40I□33U | 33 | 0.157 | 1.75 |
| PT80I40I□47U | 47 | 0.189 | 1.52 |
| PT80I40I□68U | 68 | 0.290 | 1.30 |
| PT80I40I□100U | 100 | 0.410 | 1.05 |
| PT80I45I□2U | 2 | 0.022 | 7.00 |
| PT80I45I□3U3 | 3.3 | 0.027 | 6.00 |
| PT80I45I□3U9 | 3.9 | 0.030 | 4.50 |
| PT80I45I□4U7 | 4.7 | 0.033 | 4.30 |
| PT80I45I□6U2 | 6.2 | 0.036 | 4.00 |
| PT80I45I□10U | 10 | 0.059 | 3.08 |
| PT80I45I□15U | 15 | 0.083 | 2.24 |
| PT80I45I□22U | 22 | 0.118 | 2.00 |
| PT80I45I□33U | 33 | 0.160 | 1.50 |
| PT80I45I□47U | 47 | 0.230 | 1.33 |
| PT80I45I□68U | 68 | 0.280 | 1.12 |
| PT80I45I□100U | 100 | 0.440 | 0.91 |
| PT80I60I□3U9 | 3.9 | 0.016 | 4.10 |
| PT80I60I□5U | 5 | 0.017 | 3.80 |
| PT80I60I□6U2 | 6.2 | 0.020 | 3.20 |
| PT80I60I□10U | 10 | 0.026 | 2.60 |
| PT80I60I□15U | 15 | 0.037 | 2.30 |
| PT80I60I□22U | 22 | 0.046 | 1.70 |
| PT80I60I□33U | 33 | 0.065 | 1.50 |
| PT80I60I□47U | 47 | 0.091 | 1.20 |
| PT80I60I□68U | 68 | 0.130 | 1.00 |
| PT80I60I□100U | 100 | 0.180 | 0.80 |